

S1120/118

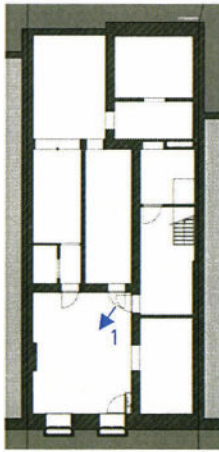
Reportage photos
intérieures

Projet
CIDSE

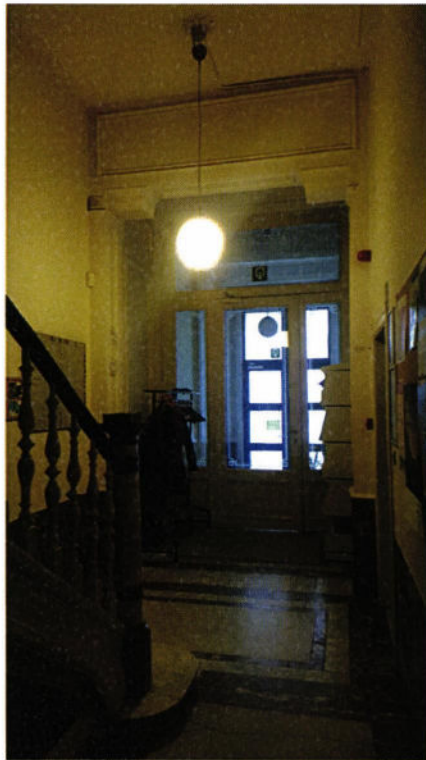
rue Stevin, 16
1000 Bruxelles



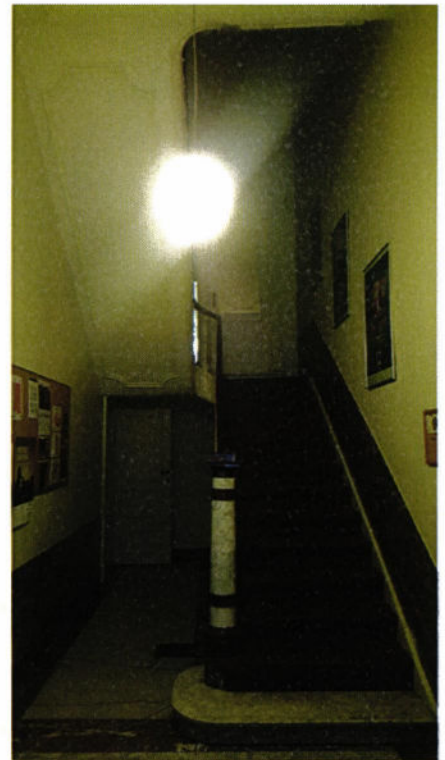
1



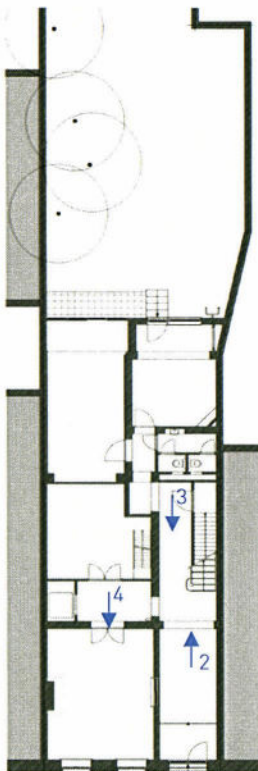
caves



2



3



rez de chaussée



4

911 2511 2

Reportage photos
intérieures

Projet
CIDSE

rue Stevin, 16
1000 Bruxelles

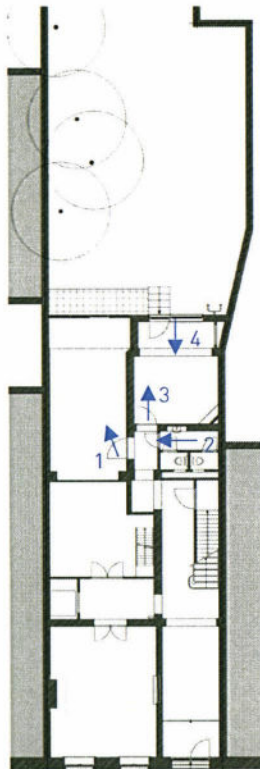
LOWA
ARCHITECTURE



1



2



rez de chaussée



3



4

Reportage photos
intérieures

Projet
CIDSE

rue Stevin, 16
1000 Bruxelles

LOWA
ARCHITECTURE



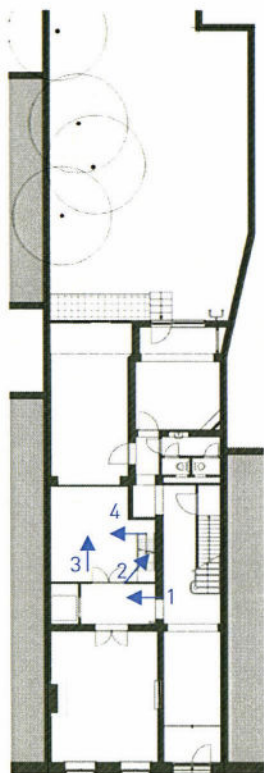
1



2



3



rez de chaussée



4

Reportage photos
intérieures

Projet
CIDSE

rue Stevin, 16
1000 Bruxelles

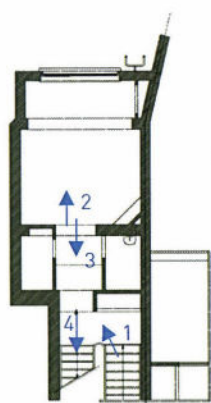
LOWA
ARCHITECTURE



1



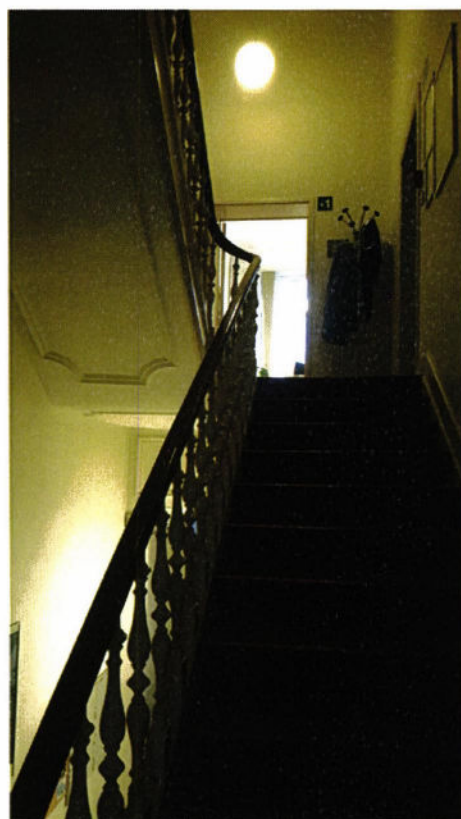
2



entre sol



3



4

Reportage photos
intérieures

Projet
CIDSE

rue Stevin, 16
1000 Bruxelles

LOWA
ARCHITECTURE



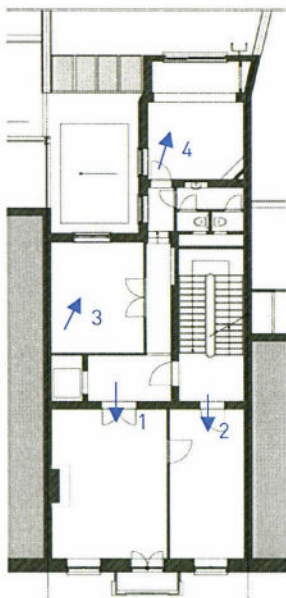
1



2



3



1^{er} étage



4

Reportage photos
intérieures

Projet
CIDSE

rue Stevin, 16
1000 Bruxelles

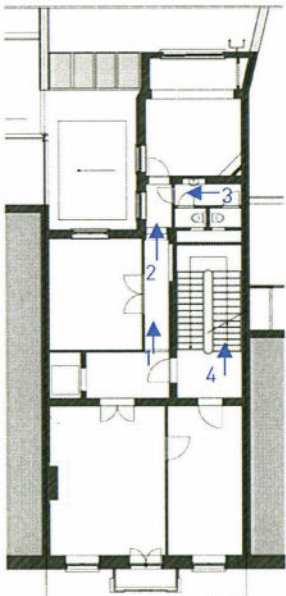
LOWA
ARCHITECTURE



1



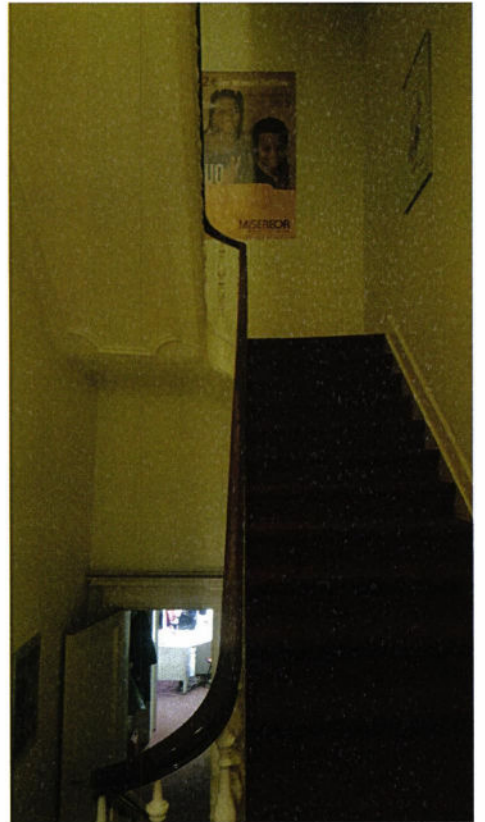
2



1^{er} étage



3



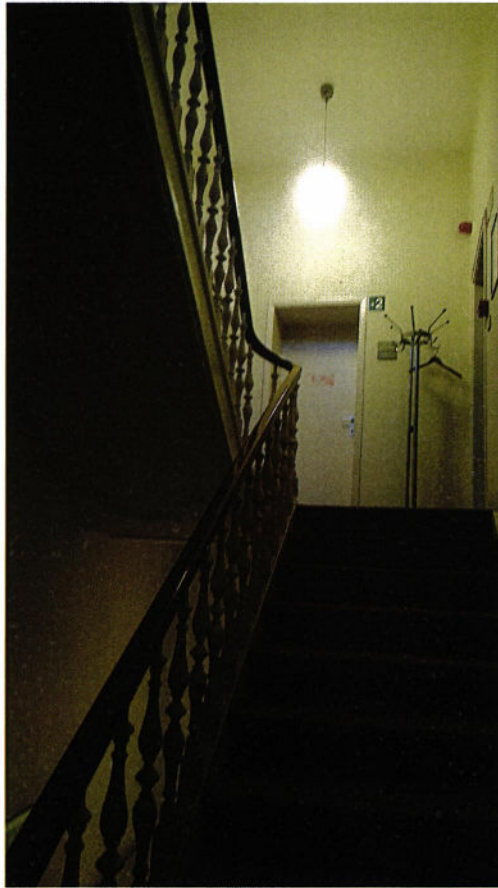
4

Reportage photos
intérieures

Projet
CIDSE

rue Stevin, 16
1000 Bruxelles

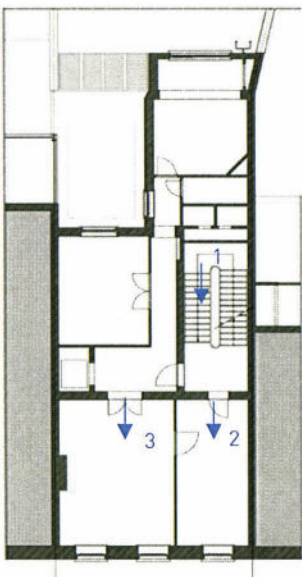
LOWA
ARCHITECTURE



1



2



2^{ème} étage



3

Reportage photos
intérieures

Projet
CIDSE

rue Stevin, 16
1000 Bruxelles

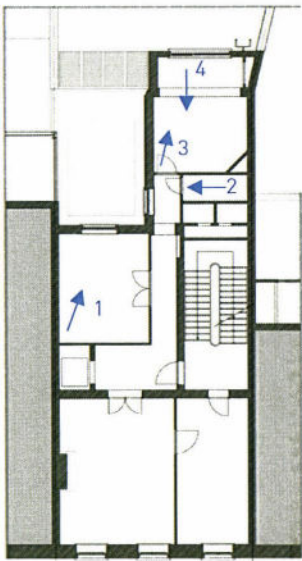
LOWA
ARCHITECTURE



1



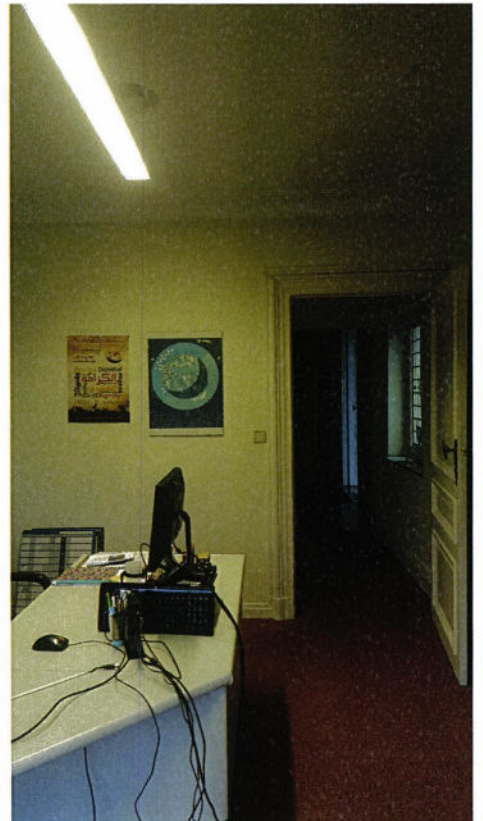
2



2^{eme} étage



3



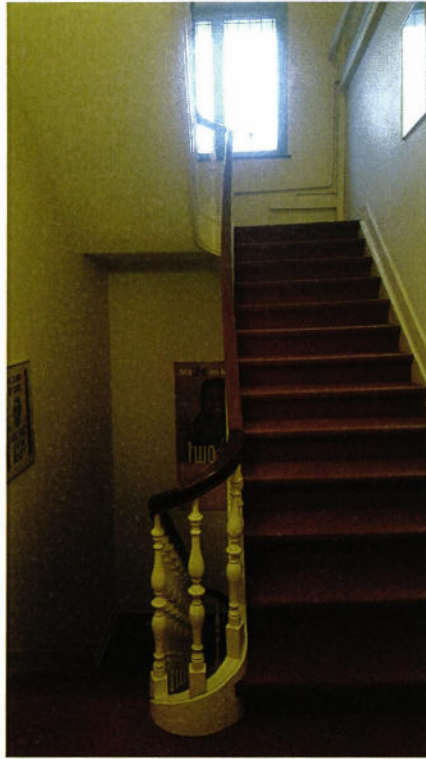
4

Reportage photos
intérieures

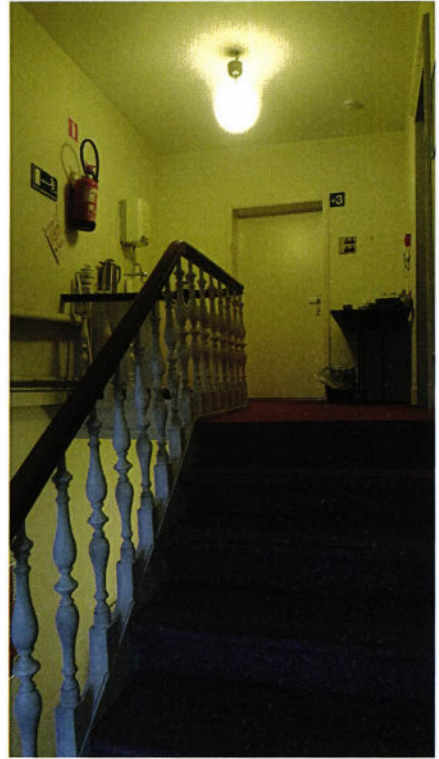
Projet
CIDSE

rue Stevin, 16
1000 Bruxelles

LOWA
ARCHITECTURE



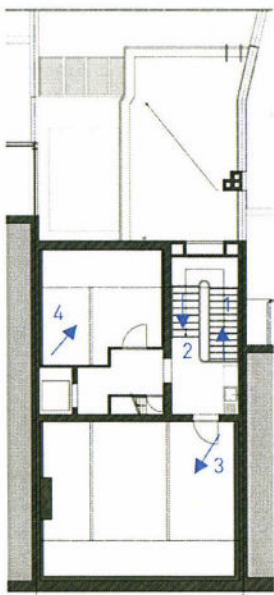
1



2



3



3^{eme} étage



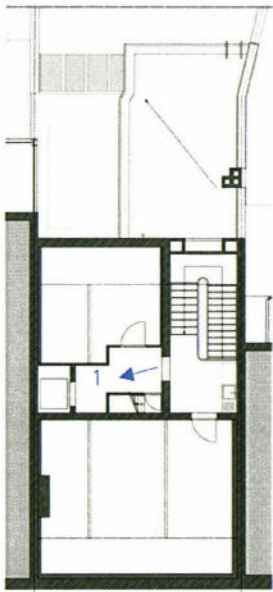
4

Reportage photos
intérieures

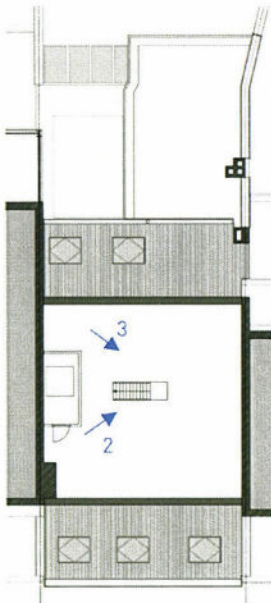
Projet
CIDSE

rue Stevin, 16
1000 Bruxelles

LOWA
ARCHITECTURE



3eme étage



grenier



1



2



3