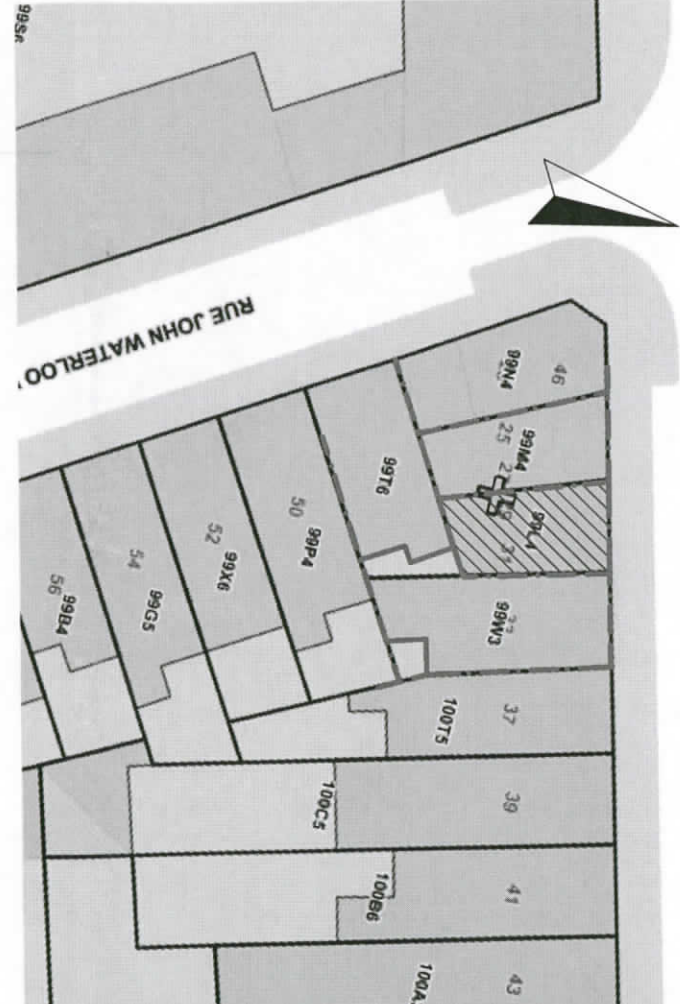
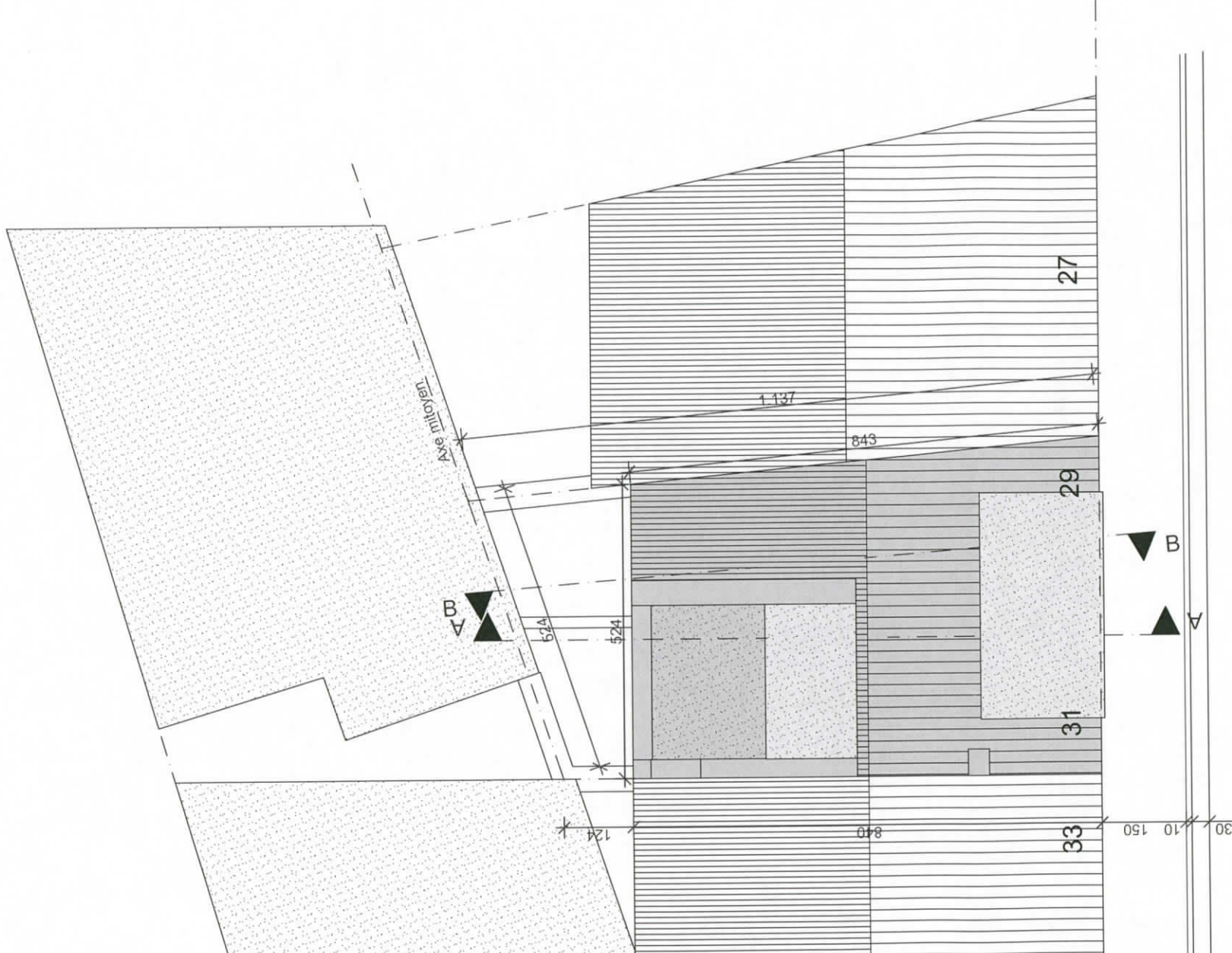


Situation

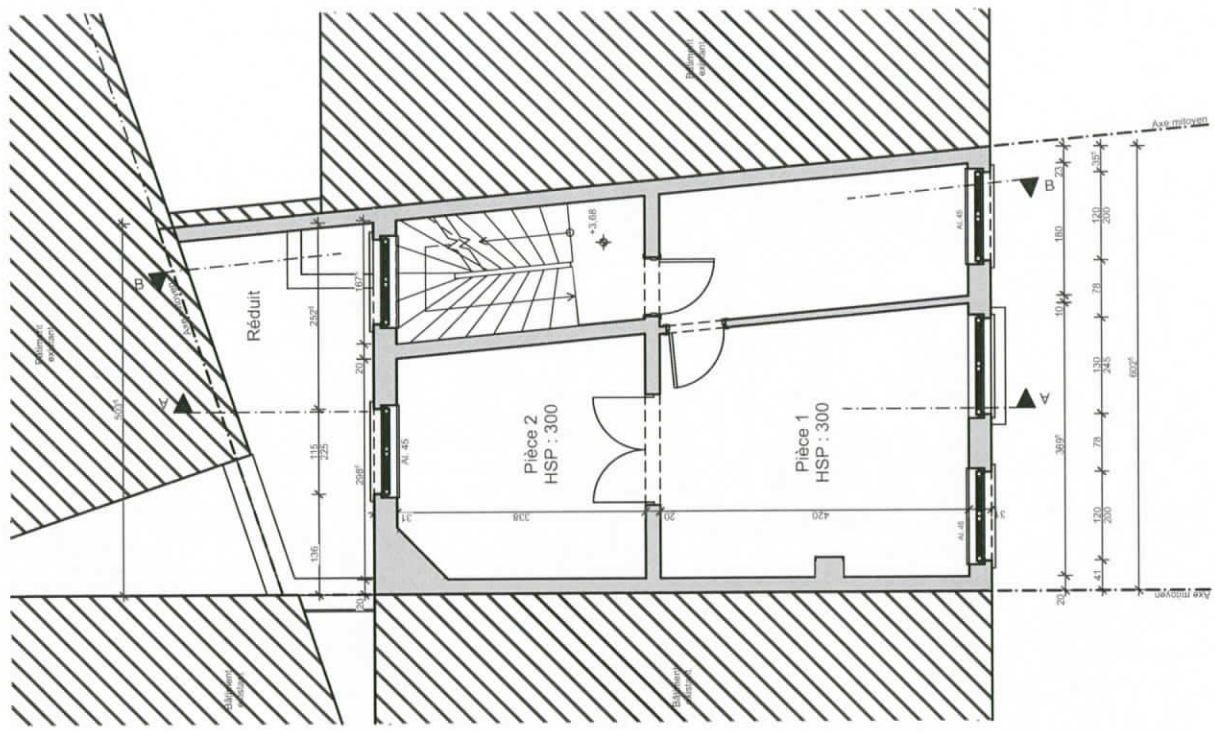
1:5000



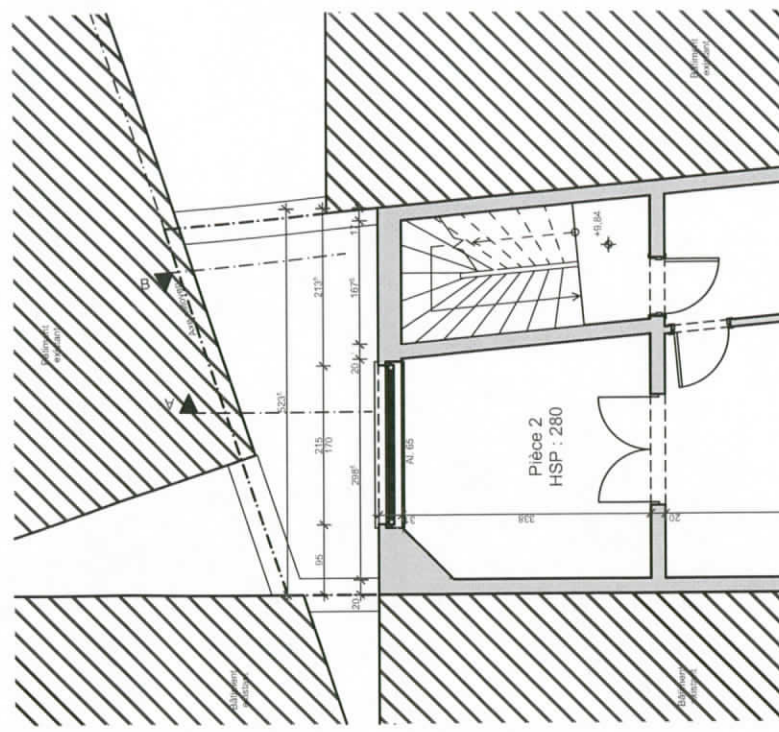


Rue de Gravelines



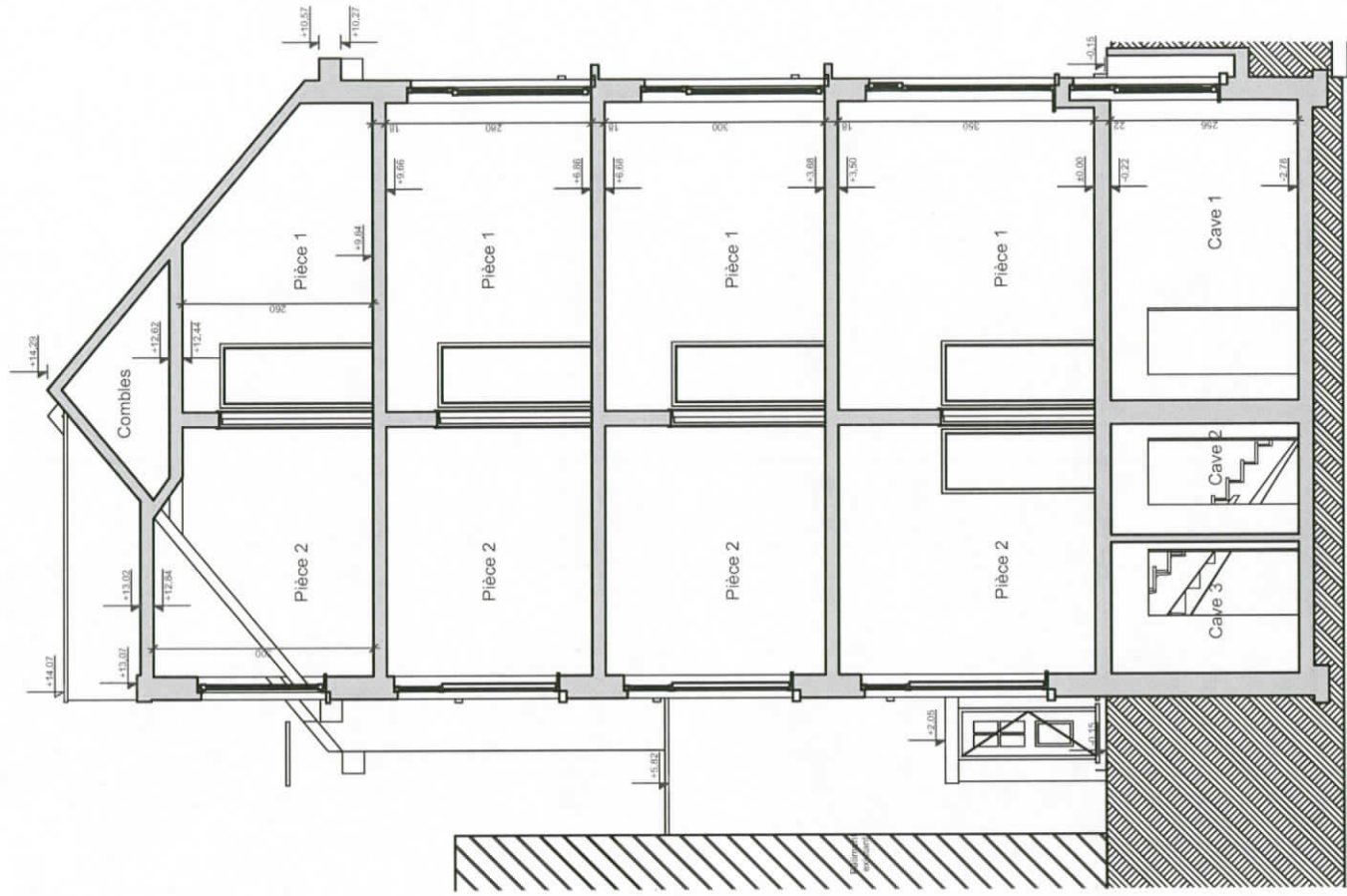


1er Etage
1:100

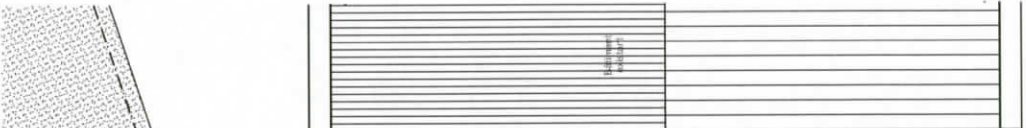


Commerce
1:100

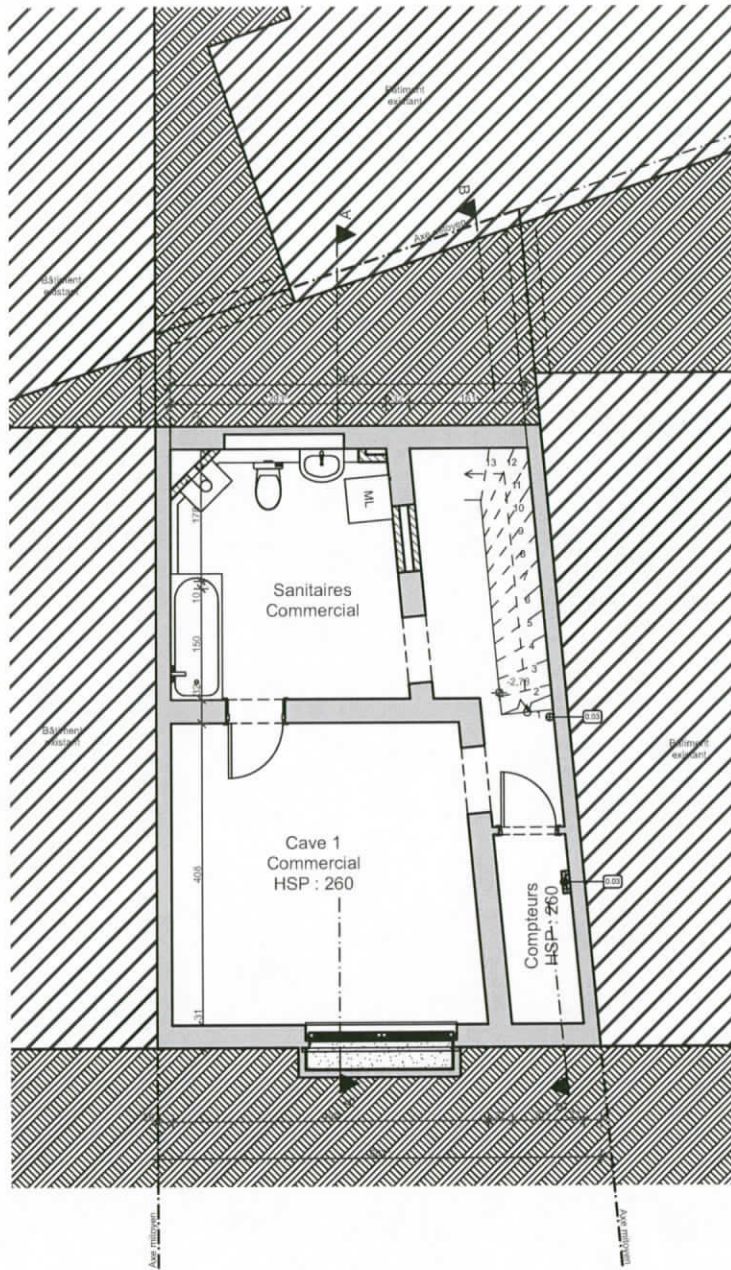




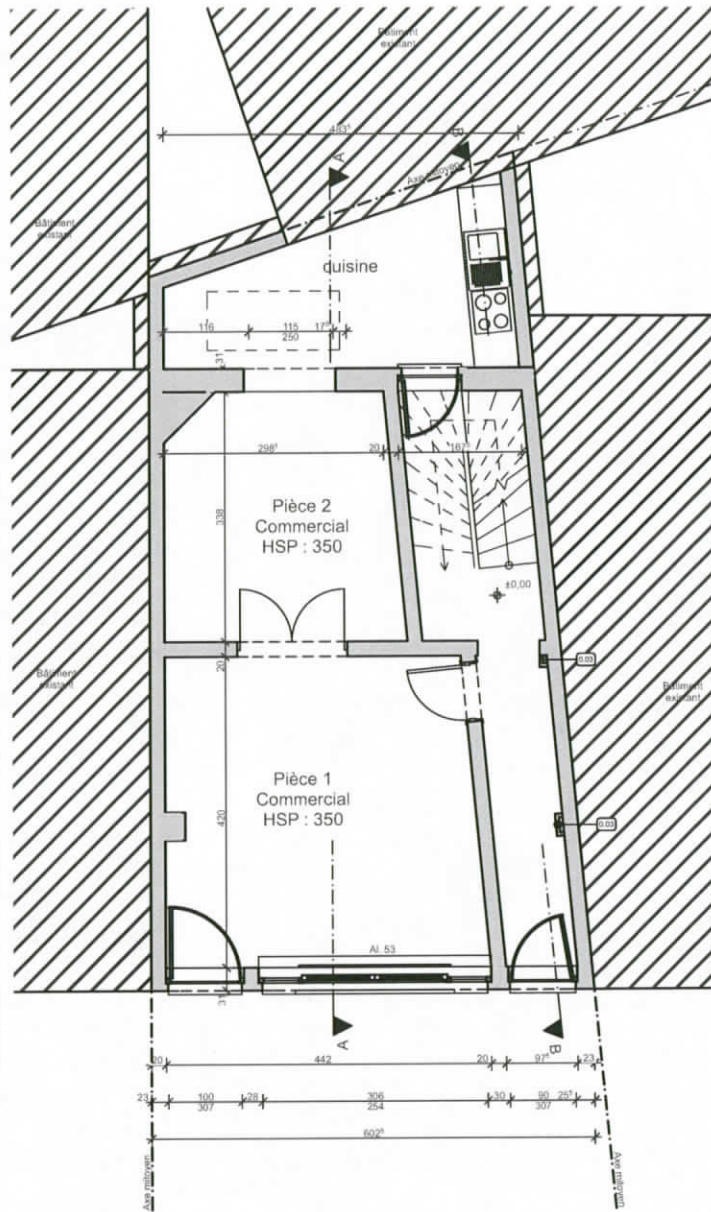
Coupe A-A
1:100



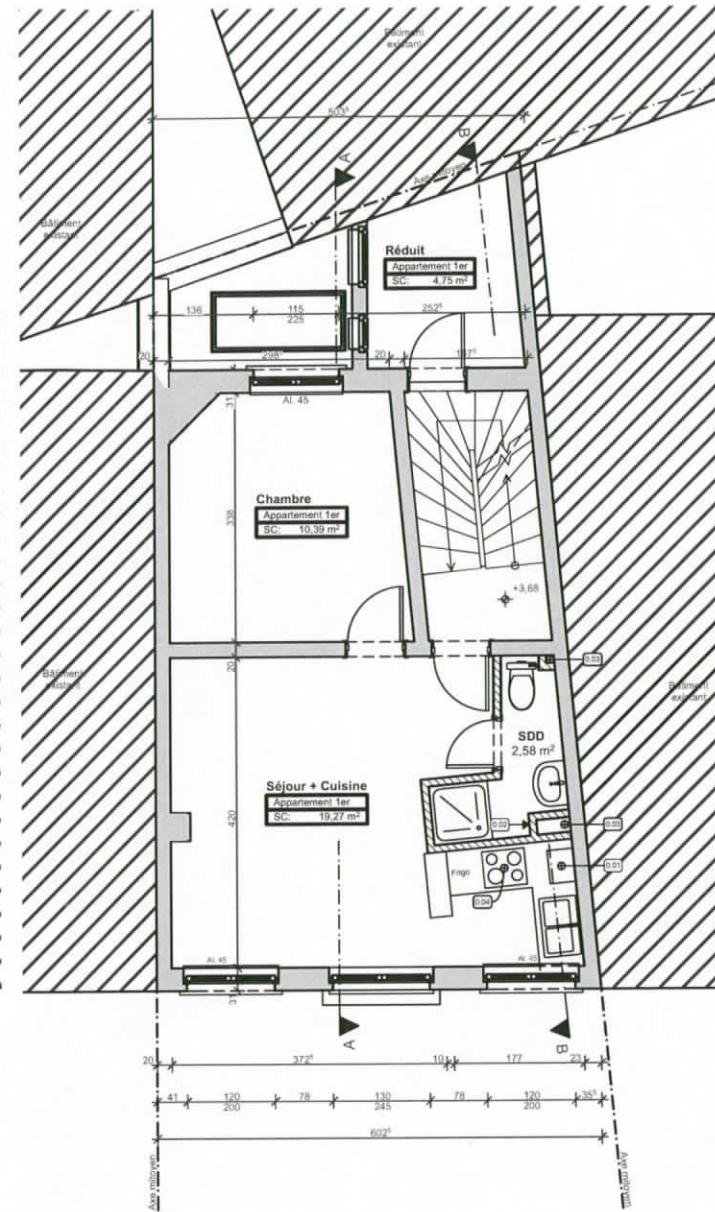
- Grenier
1:100



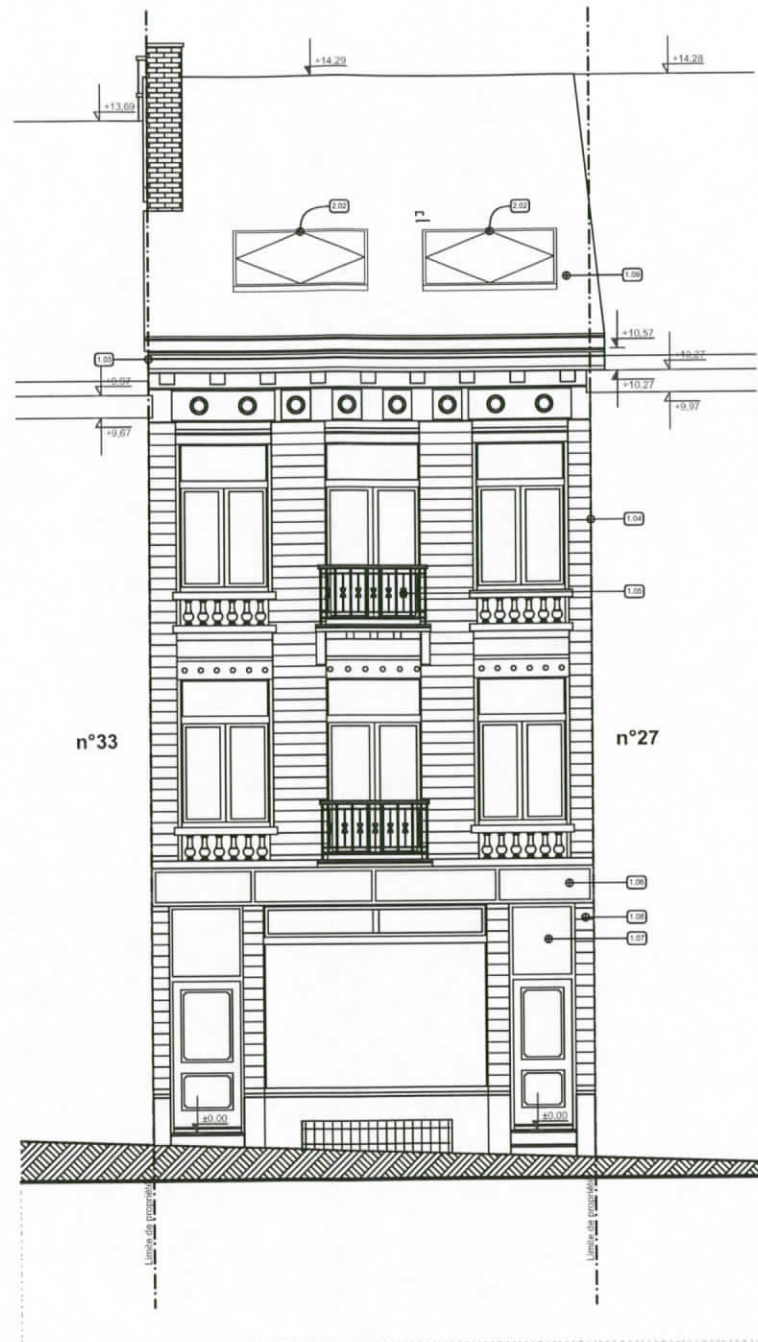
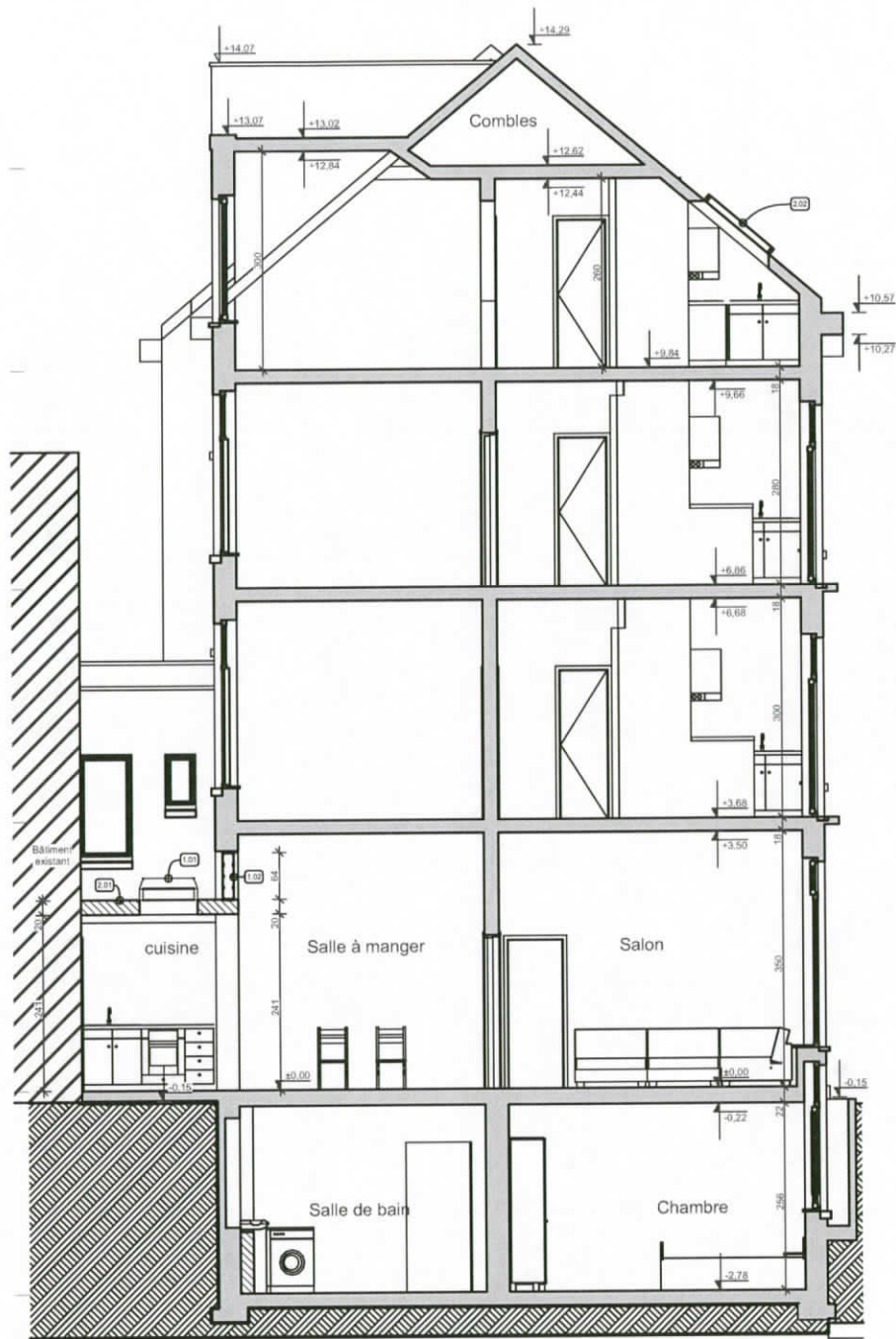
Caves - Existant de fait

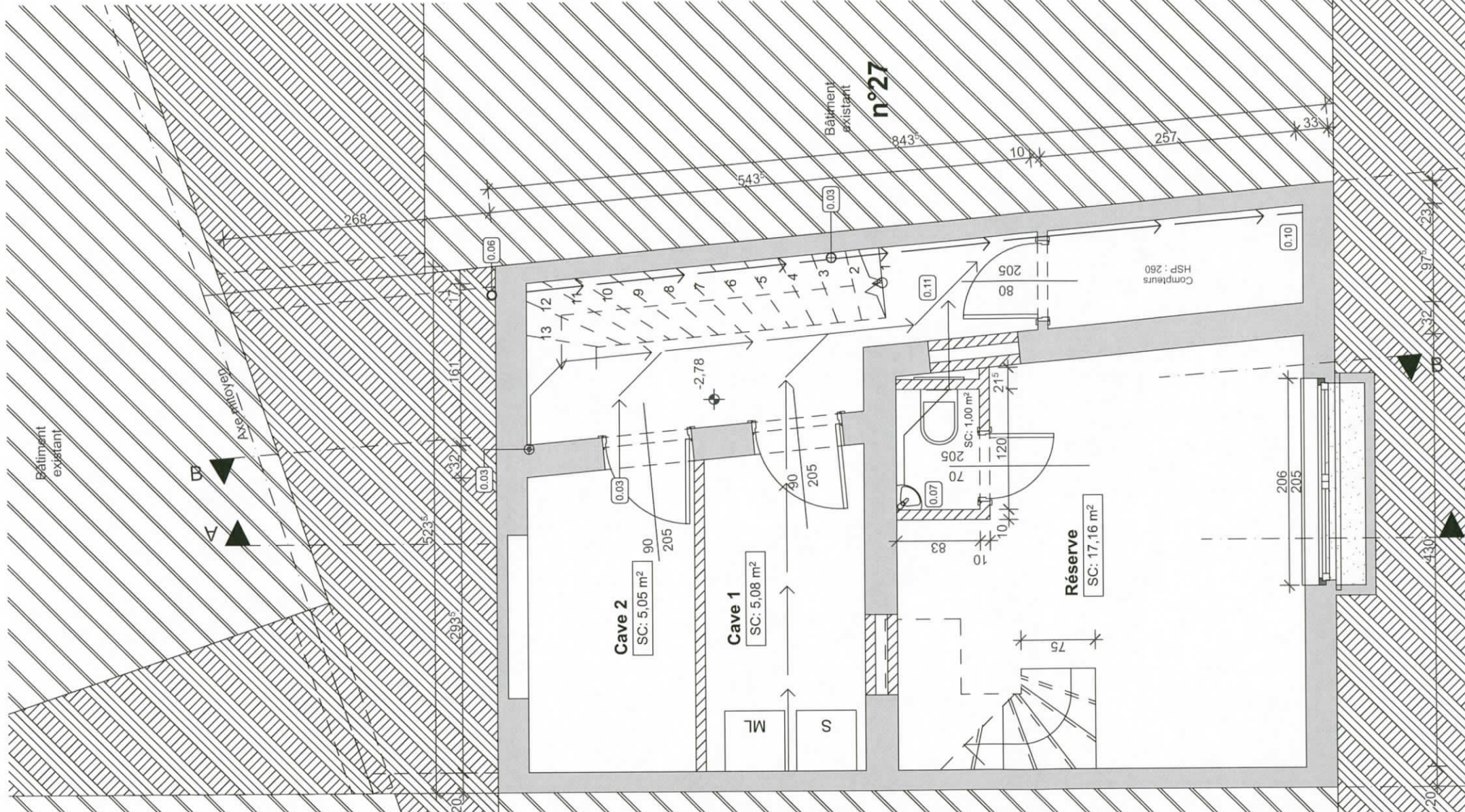


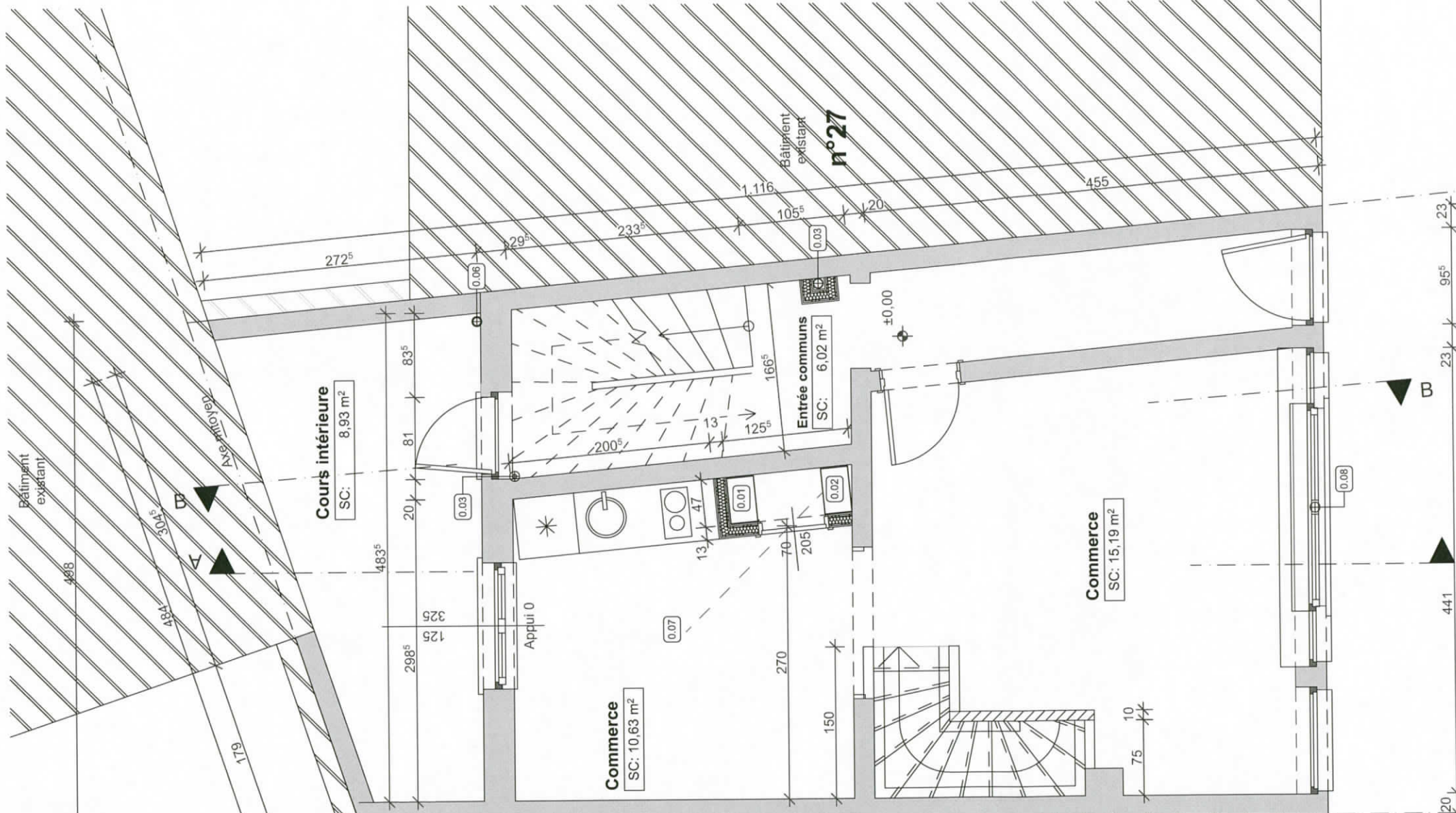
REZ - Existant de fait

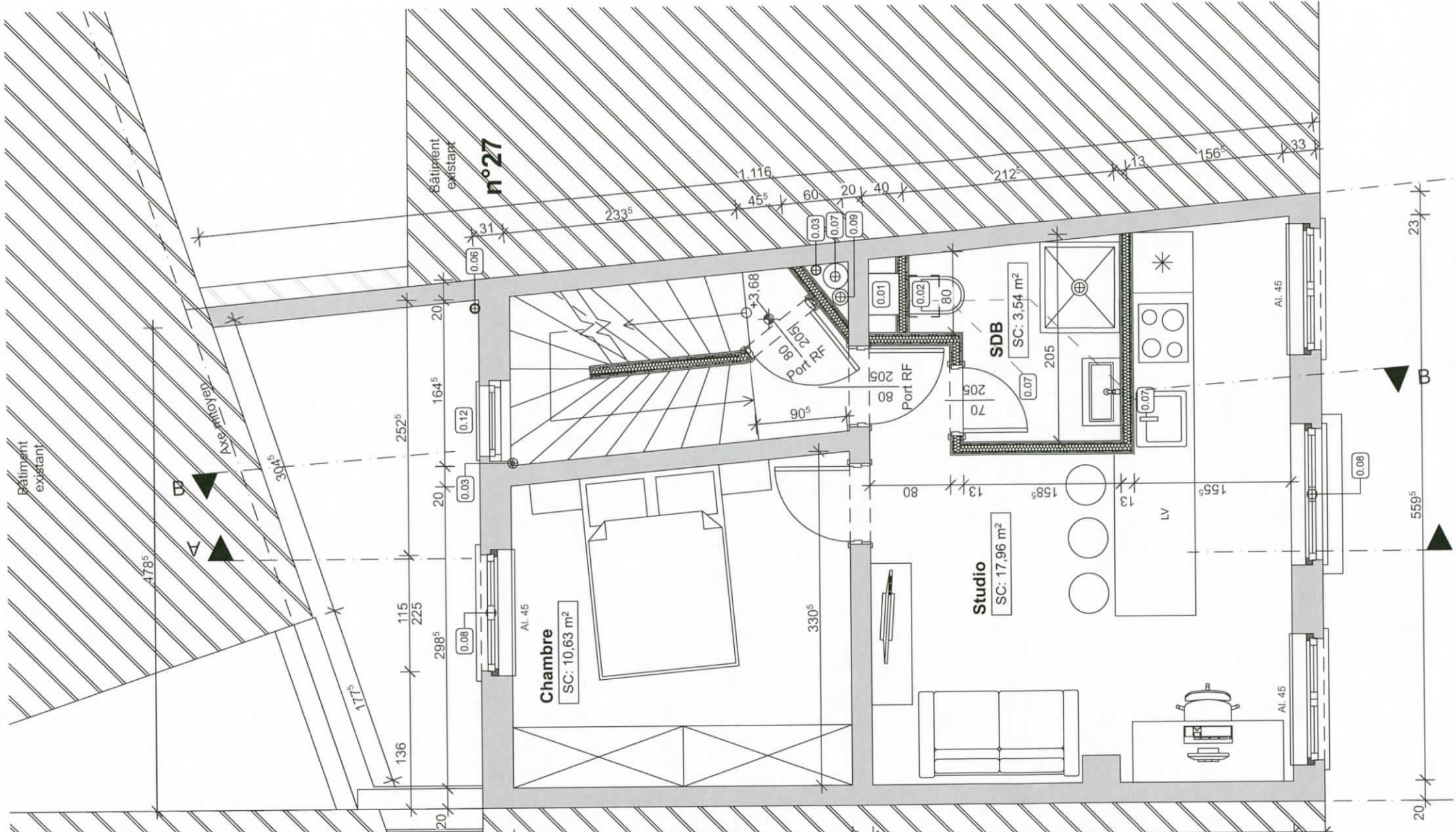


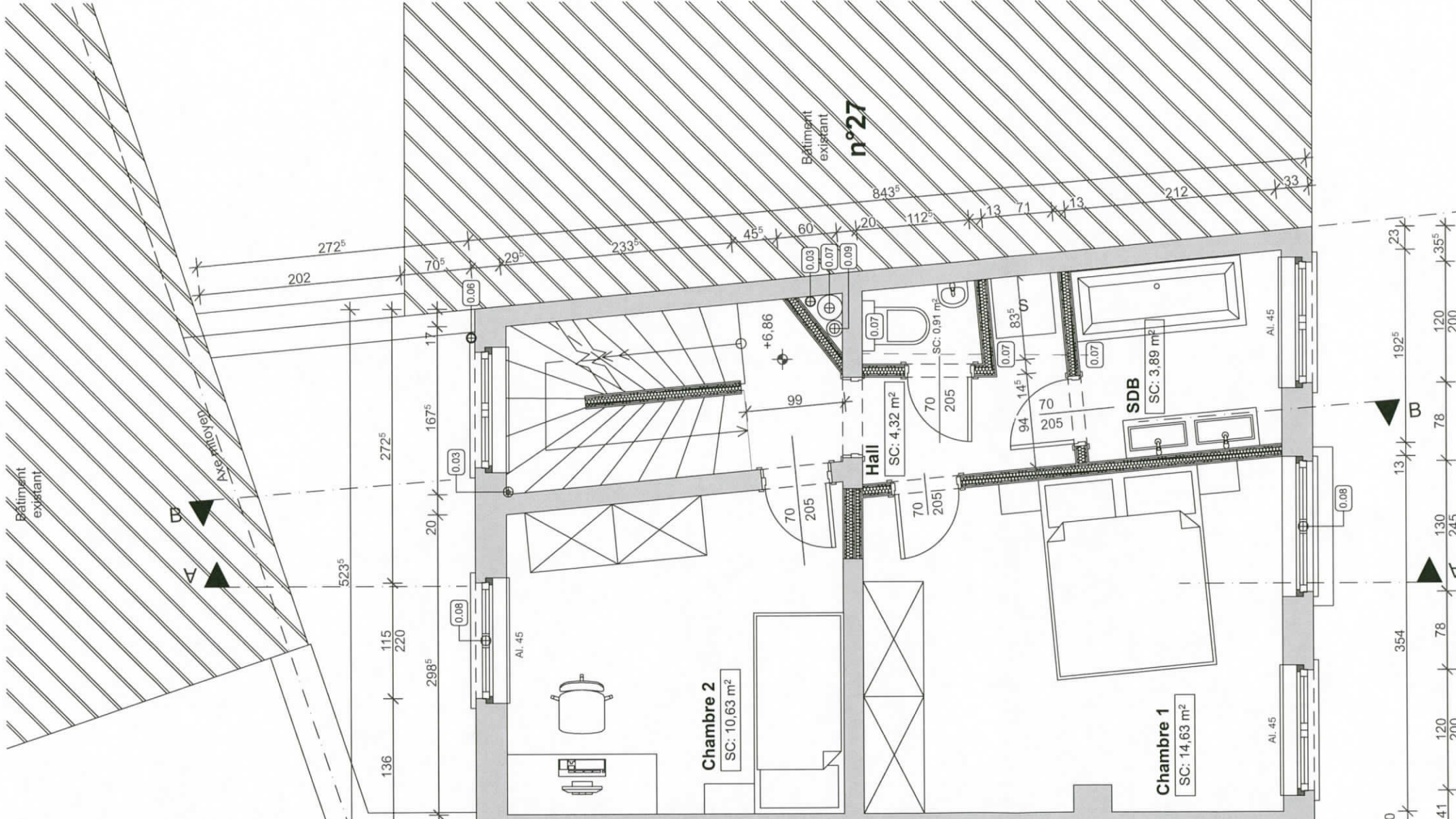
1er et 2ème - Existant de fait

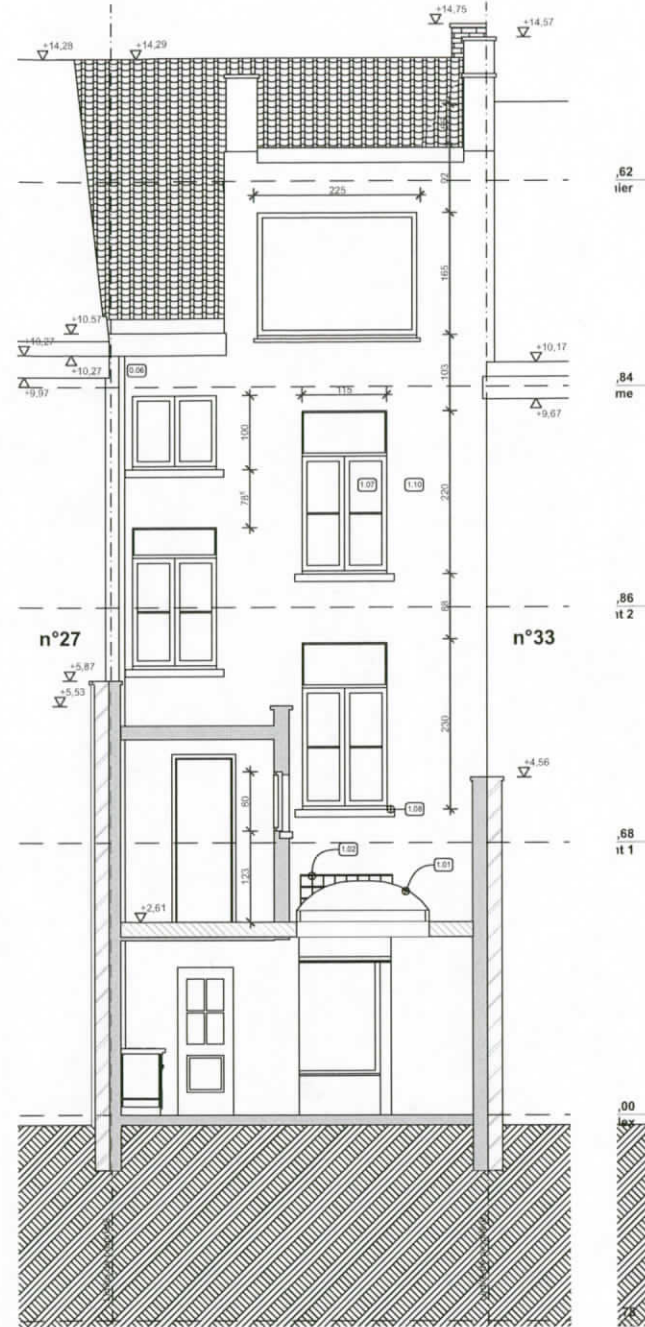
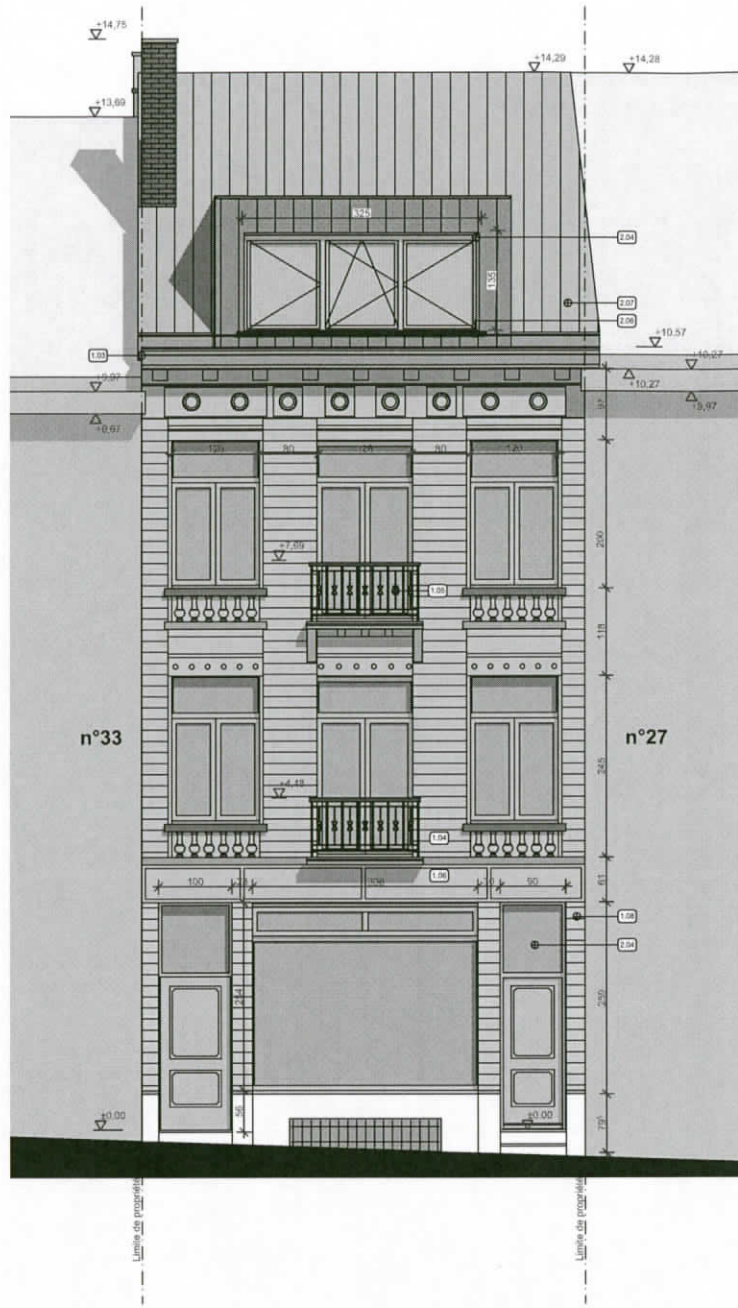


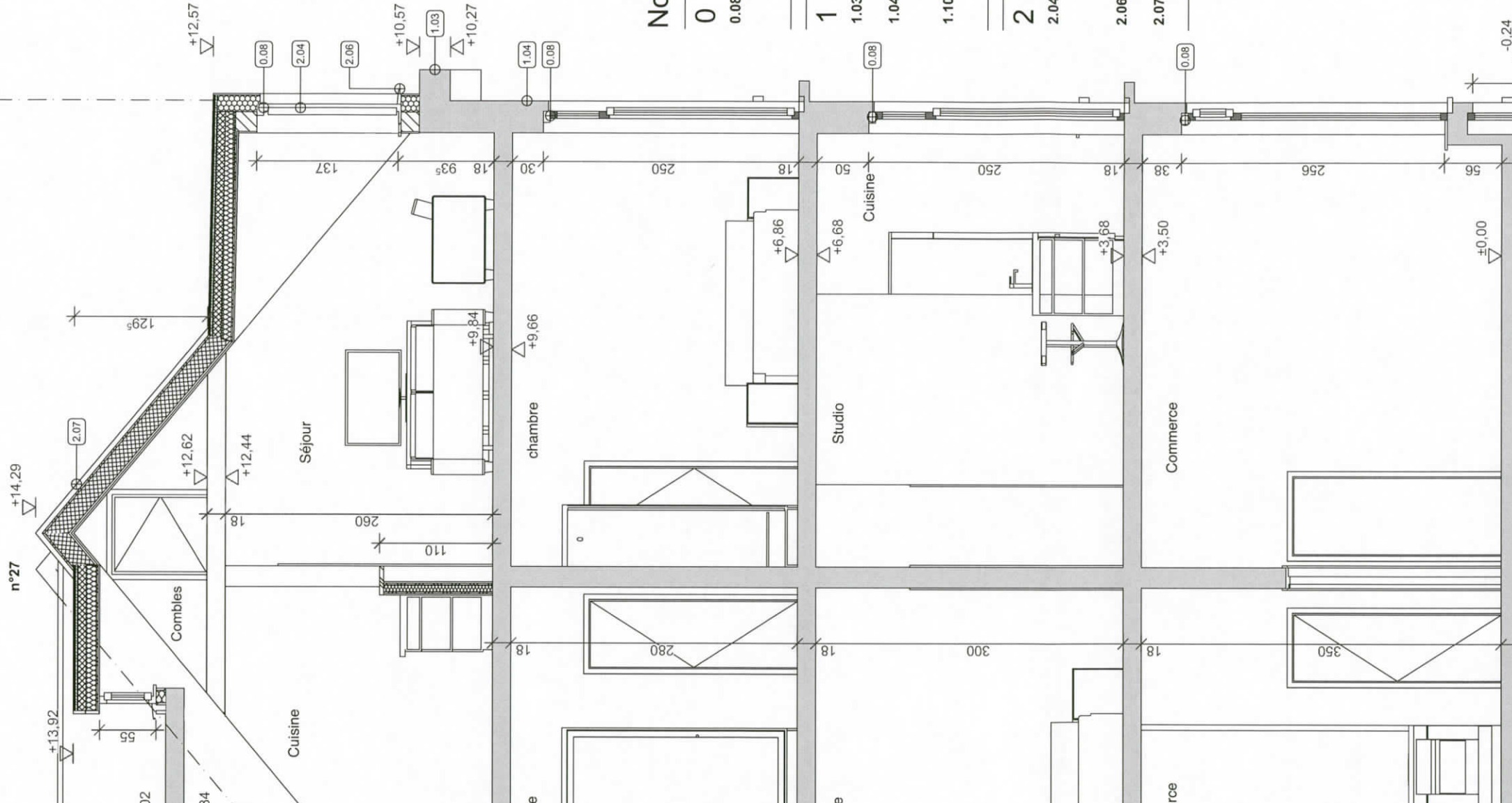












Notes

0 Techniques

0.08 OAR
Ouverture d'aération
réglable type Invisivent AK

1 Matériaux

1.03 Corniche
Bois peint en blanc

1.04 Façade
Enduit mouluré - peint
Teinte blanc cassé

1.10 Façade Arrière
cimentage gris

2 Modifications

2.04 Châssis
Châssis en bois peint: gris
claire
double vitrage

2.06 Seuil: aluminium
Appui aluminium gris forcé

2.07 Nouvelle toiture
Ardoises - gris claire